

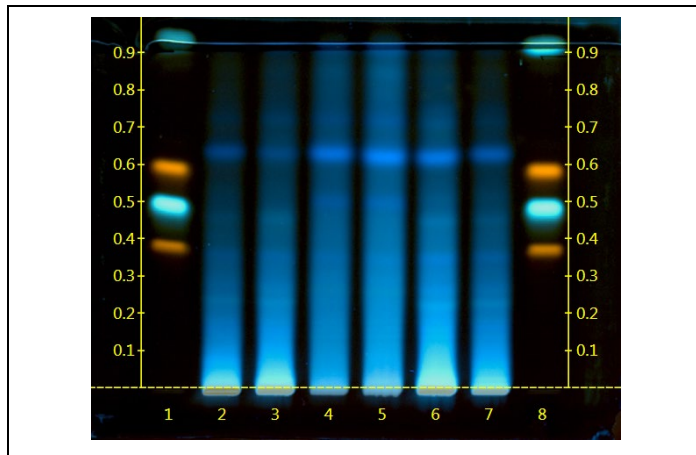
Certificate Issued To:
Lost Empire Herbs
195 Aviation Way Suite 102
Watsonville, LA 95076
USA



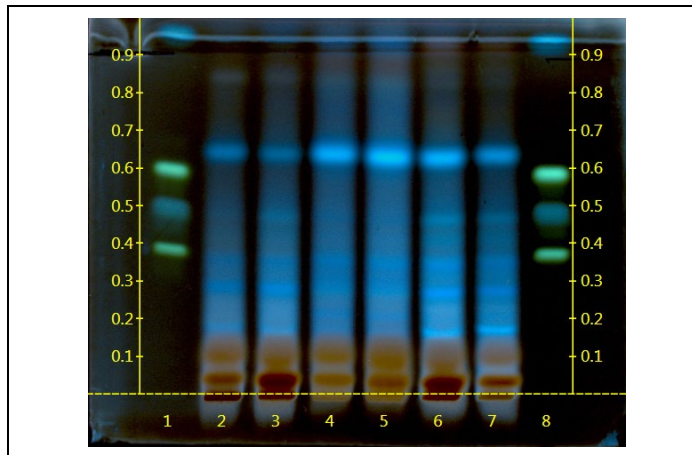
Work performed at:
Alkemist Labs
12661 Hoover Street
Garden Grove, CA 92841
714-754-HERB (4372)
714-668-9972 (FAX)
Sales@Alkemist.com
www.Alkemist.com

Certificate of Analysis: Longan Berry (LONGAN100082018)
High Performance Thin-Layer Chromatography with Photo-Documentation

1



2



Company Name: Lost Empire Herbs
Title: Longan Berry
Plant Part: fruit
Sample Received: 01/11/19
Sample Packaging: Clear Reclosable Plastic Bag
Form of Botanical: powdered extract
Appearance: tan powder
Lot Number: (LONGAN100082018) → Lanes 4(8µl), 5(12µl)
Sample: 19011RJX_1
Latin Name: *Dimocarpus longan* Lour. [Sapindaceae]
Reference Sample: Lane 2(8µl) (KOH19613SWH1), Lane 3(8µl) (KOH20013MYWY1), Lane 6(8µl) (KOH24514DMMK1), Lane 7(4µl) (KOH24514DMMK1) *Dimocarpus longan* (fruit); held at Alkemist Labs, Garden Grove, CA.
Analyst: A. Davis, N. Afendikova, M. Edwards, S. Rodriguez, S. Kabbaj, K. Johnston, D. Jimenez, M. Lababidi, J. Nguyen, N. Hoang, K. Tran 113796
Sample Preparation: 1g+10mL water, sonicate/heat at 50°C for 30 min. SPE condition with 5mL Methanol, equilibrate with 5mL water, load, dry, elute with 1mL Methanol(2x)
Stationary Phase: Silica gel 60, HPTLC plates
Mobile Phase: Ethyl Acetate: Acetic acid: Formic Acid: Water [10/1.1/1.1/2.6]
Detection: (1) Natural Product + Polyethylene Glycol, 366nm (Reich, E., 2007)
(2) 10% Sulfuric, 100°C, 2min, 366nm (Reich, E., 2007)
Reference Standard: Lanes 1(2µl) and 8(2µl) Rutin (A0348926, ACR), Hyperoside (0905/0, XSYN), Caffeic acid (02, XSYN), Chlorogenic Acid (3450-TVM, CHR), Methanol (171256517, VWR)
Reference Source: Method Developed by Alkemist Labs
IDT-SOP-72-01

Comments & Conclusions: Lanes 4, 5 are the test sample Longan Berry (LONGAN100082018). Lanes 2, 3, 6, 7, are the reference samples used for comparison. This test sample, Longan Berry (LONGAN100082018) is consistent with the chromatographic profile of the reference samples of *Dimocarpus longan*, used above. **This test sample Longan Berry (LONGAN100082018) has characteristics of *Dimocarpus longan* fruit.**

NOTE: The above conclusion may be a function of the natural variance found in botanicals &/or the extraction process used to create specific extracts. The growing and drying conditions, age, seasonal variations, geographic location, extraction solvents, etc. all play a role in the phytochemical fingerprint of botanicals as well as their extracts; hence, chromatographic variations are expected.

Examined, Reviewed & Authorized by: Mohamed Labadidi, HPTLC Supervisor, Alkemist Labs

Report Date: 01/24/19

ISO/IEC 17025



Note: Any unidentified lanes in the above chromatograms are confidential and may represent internal studies or other test samples not related to LONGAN100082018. This report applies to the sample investigated and is not necessarily indicative of the quality or condition of apparently identical or similar products. This report is for the exclusive use of the party who requested the report and not for public dissemination or use by third parties, including for promotional purposes, without the prior written permission of Alkemist Labs, Inc. This report provides technical results for a specific sample and the report shall not be altered, modified, supplemented or abstracted in any manner. Any violation of these conditions renders the report and its results void. © 2019 Alkemist Labs, Inc. All Rights Reserved